

# V1100

可靠的行业应用专家

Reliable industrial  
application expert



冗余安全设计 | 便携折叠机身 | 60分钟续航 | 10KM图传 | IP43 防护

FlightSafety | Foldable design | 60-min flight duration | 10KM video transmission | IP 43



[www.walkera.com](http://www.walkera.com)



### 4K高清航摄相机/4K High Definition Aerial Camera

高清的图像经过后期处理，可应用在地图、建筑测量领域。

HD images could be used in mapping and architecture sectors.



### 高亮显示屏/High-brightness Display Screen

屏幕最高亮度达2000 cd/m<sup>2</sup>，约为普通移动设备的两倍，在强光直射下仍清晰可见，作业更加安全可靠。

Display screen with maximum brightness of 2000 cd/m<sup>2</sup>, It's about twice as safe and reliable as ordinary mobile devices, and it's still visible in direct sunlight.



### 30倍光学变焦相机

超远距离监控，细节一览无遗。电力通信设施巡检、交通巡逻，桥梁检测等任务变得更加安全和高效。

### 30X Optical Zoom Lens

The ultra long range inspection enables you to clearly observe the details of the object. Besides, the long range monitoring makes powerline and communication inspection, traffic patrol, bridge inspection and so forth much safer and more efficient.



**红外热成像相机  
(定制版)**

红外线热成像相机有穿透能力强、探测距离远、可识别隐藏目标、温度检测及昼夜可视等优势。基于图像与温度算法，在不利气候环境下(如稀疏的树叶、烟、雾及伪装等)识别目标。

### Thermal Infrared Camera(customized)

Based on image and temperature algorithm, the camera enables you to identify targets in bad weather conditions.



**微光夜视相机  
(定制版)**

适用于夜间光线微弱的环境，获得高清晰度、低噪点的图像，广泛应用在军警安防领域。

### Low-light Night-vision Camera(customized)

Suitable for low-light environments, it helps you to receive high definition, low noise images, it is widely used in military and security sectors.

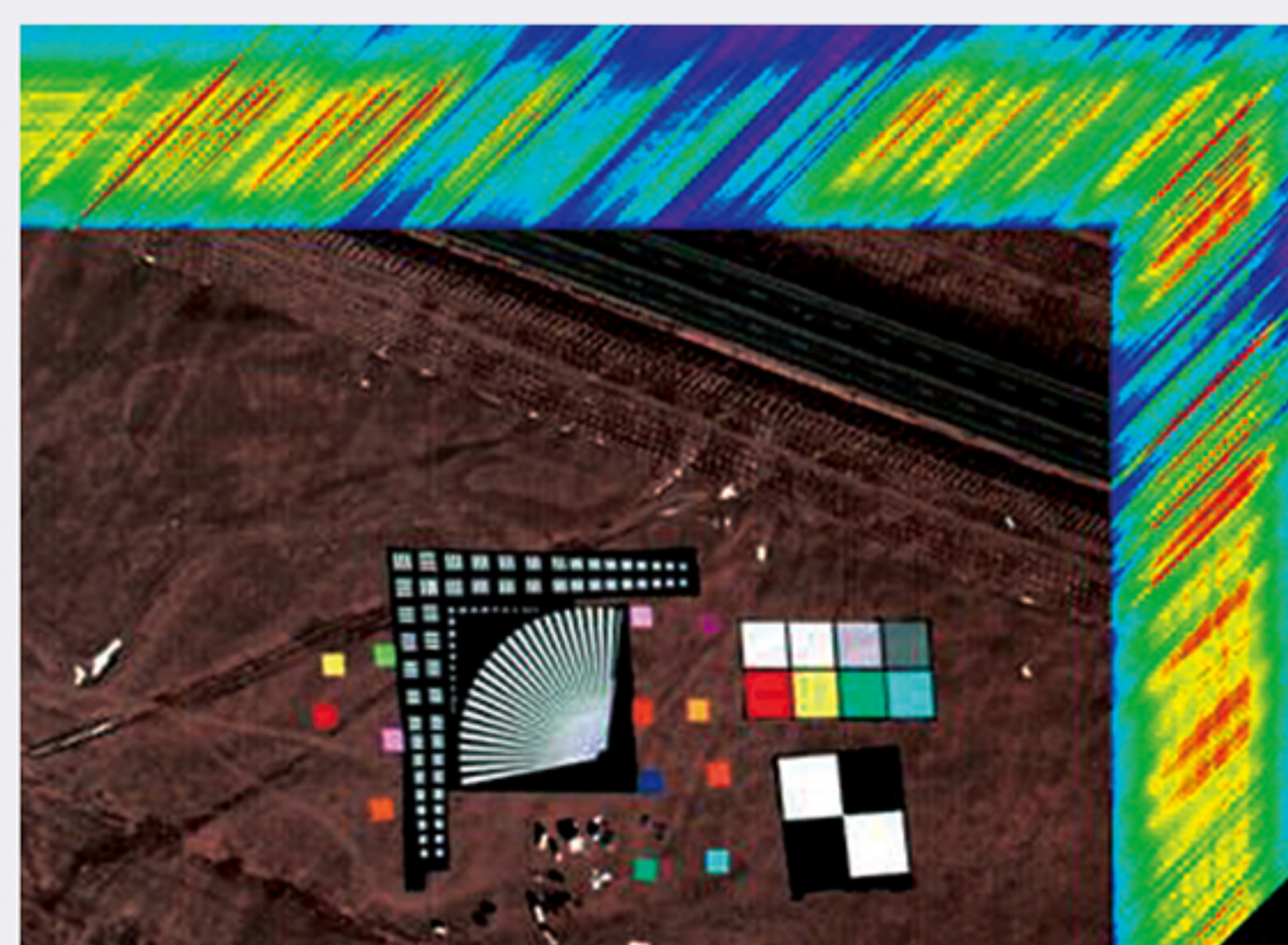
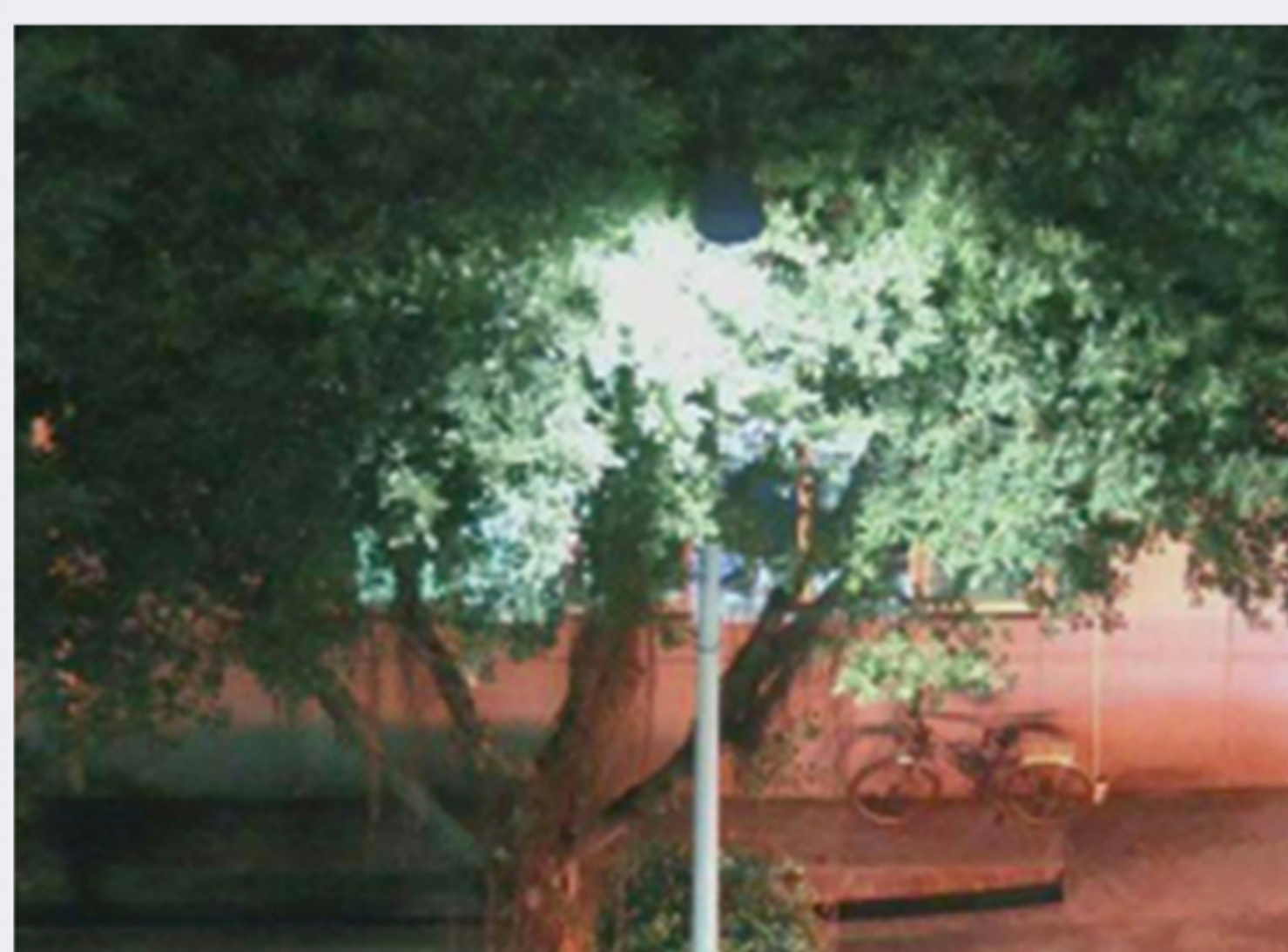
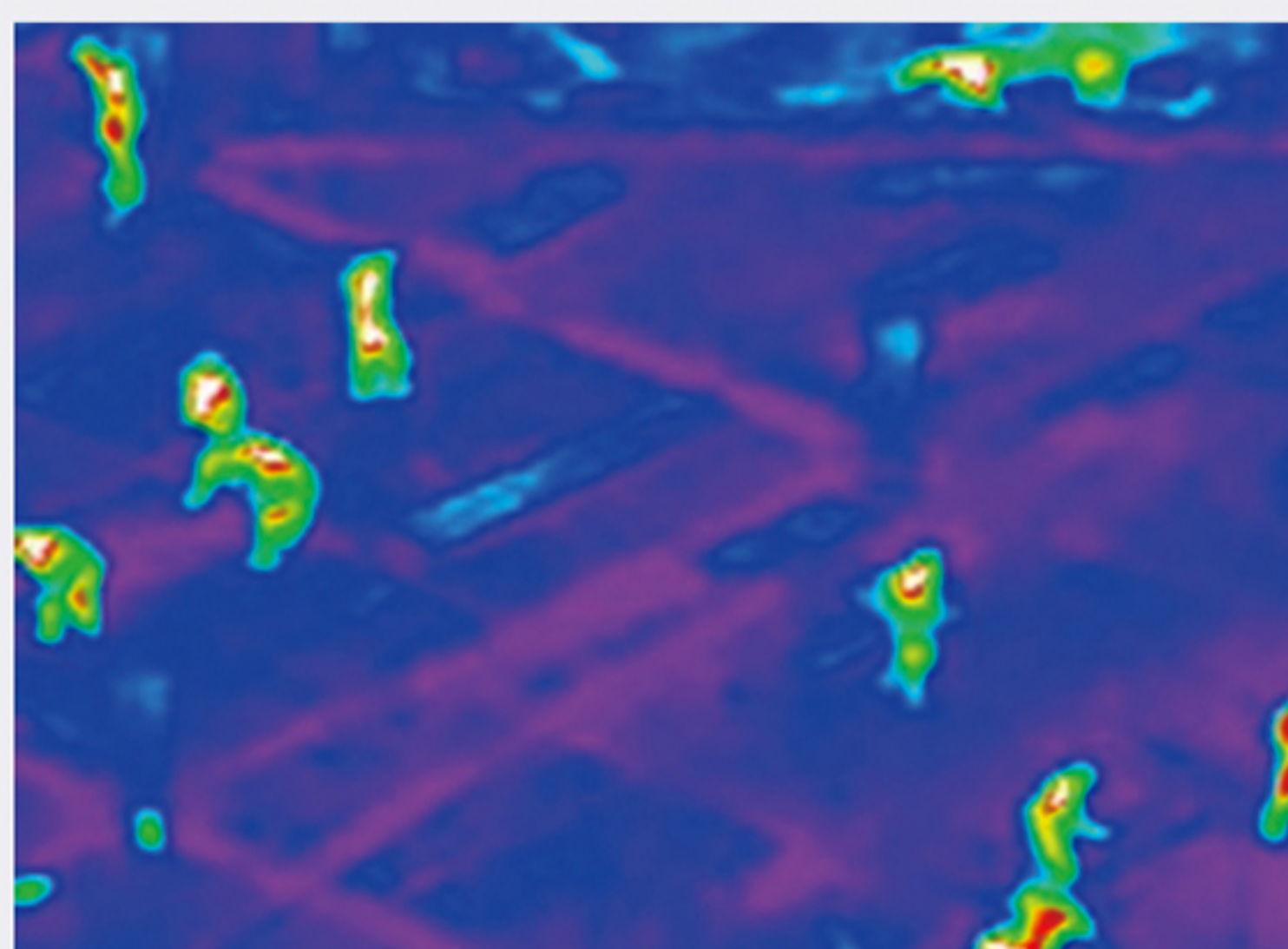


**多光谱相机  
(定制版)**

广泛应用在农业、林业、种植业等等，通过后期技术合成处理，为农业灾害评估提供准确信息。

### Multi-spectral Camera(customized)

Widely used in agriculture, forestry, and crop production sectors. Precise information could be provided to disaster evaluation in these sectors.



## 便携折叠设计 / Foldable Design For Great Portability

创新桶式折叠设计，机臂、脚架均可折叠，轻松携带。组装简单方便，迅速启动作业。

The innovative design makes the aircraft arms and landing gear all foldable and portable. Easy assembly generates quick operation.



### 耐久续航

电池系统由两块22000mah电池组成，最大连续飞行时间长达60分钟（空载状态，海平面无风状态下悬停飞行）。

#### Great Flight Duration

The battery system is comprised of three 22000mAh batteries, providing a maximum of 60-min flight duration(empty payload, zero wind and hovering conditions).

### 行业应用专用软件

针对行业应用的特殊需求，我们开发V1100专用APP简化操作，轻松作业。

#### Industrial Application Software

To meet special requirements in many industrial applications, we developed an APP for V1100 that greatly simplifies the flight operations.

### 高清图传

V1100使用先进的2.4G和5.8G双频远距离传输系统，最大图传距离可达10KM。波长长，抗干扰能力强，传输稳定可靠。

#### HD Image Transmission

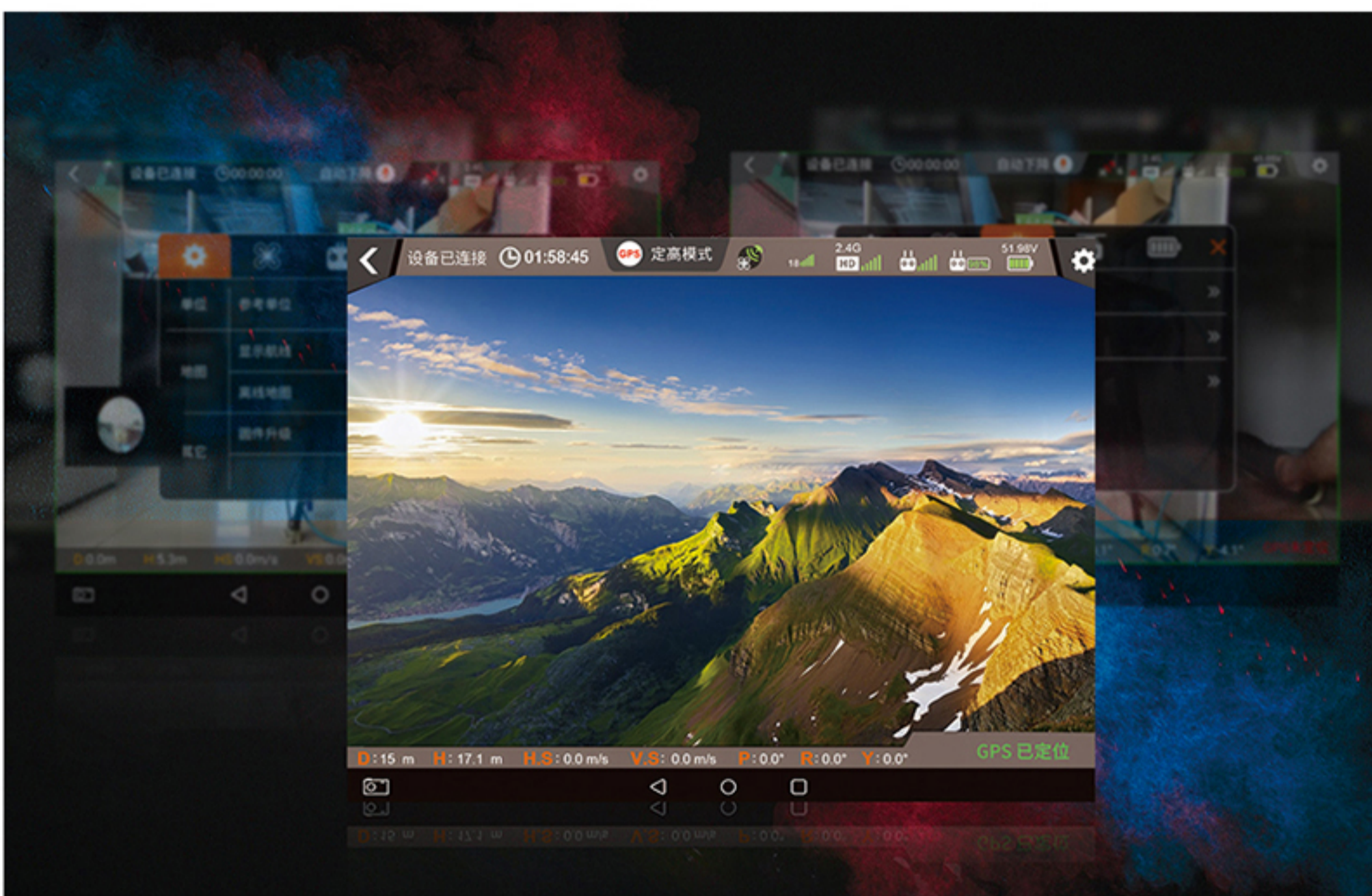
V1100 integrates the advanced 2.4G and 5.8G dual frequency long range video transmission system, which makes the maximum video transmission range as long as 10KM. Long wavelength, strong anti-interference ability, stable and reliable transmission.

### 大载重，三防性能

具备强大的载荷扩展功能，通过搭载高度集成的设备在面对不同的应用场景时仍能游刃有余。机身采用封闭式设计，拥用IP43三防能力具备工业级防水、防尘防腐能力。

#### Large Load, Three Safeguard

With powerful load expansion function, it can be used in a wide range of applications with highly integrated devices. The fuselage adopts closed design, IP43 three-proof capability, and has industrial grade waterproof dustproof and anti-corrosion ability.



# 行业应用可搭载平台 / Payload-carrying Platform For Industrial Applications



热成像相机  
(定制版)  
Thermal Imaging Camera  
(customized)

## 适用电力、搜救

高灵敏度热成像相机，突破光线和空间的局限，可随时随地捕捉清晰、精准的热图像。让你能快速搜索大面积区域，或近距离检测难以攀爬的设备。工作变得更加高效、轻松和安全。

### Suitable for power, search and rescue sectors

Highly sensitive thermal imaging camera, designed for breaking the light and space limits, capable of capturing clear and precise thermal images wherever you are, anytime. It allows you to quickly search a large area or hard-to reach devices, making the work more efficient, easier and safer.



微光夜视相机  
(定制版)  
Low-light Night-vision Camera  
(customized)

## 应用警用侦察、夜晚救援

在低照度环境下，拍摄清晰物体画面，适合夜晚微光环境拍摄作业。

### Suitable for police reconnaissance, nighttime rescue

In low-light environments, it is able to shoot clear images of objects, suitable for nighttime low-light missions.



多功能气体分析仪  
(定制版)  
Multi-purpose Gas Analyzer  
(customized)

## 应用环境检测，消防救援

Suitable for environmental inspection, firefighting, search and rescue.



倾斜相机  
(定制版)  
Tilt Camera(customized)

## 应用地图测绘

Suitable for surveying and mapping.



探照灯, 喊话器  
(定制版)  
Searchlight, Loudspeaker  
(customized)

## 应用消防救援，警用侦察

Suitable for firefighting, search and rescue, police reconnaissance.

## 飞行器参数

螺旋桨尺寸	21x7 inch
对称电机轴距	1133mm
机身尺寸	展开1200 x 1050 x 480mm / 折叠600 x 480 x 480mm
重量	标准起飞重量10kg (含电池) / 最大起飞重量15kg
遥控器	WKRC-H15Z
最大上升速度	5m/s
最大下降速度	2m/s
最大水平飞行速度	定位模式5m/s, 运动模式8m/s, 姿态模式15m/s
最大可倾斜角度	定位模式30°, 运动模式30°, 姿态模式30°
最大旋转角速度	120°/s
最大可承受风速	8m/s
悬停精度	垂直: ±0.5m(GPS定位正常工作时) 水平: ±0.1m(GPS定位正常工作时)
飞行时间	无负载: 标准飞行时间60分钟
工作环境温度	10°C 至 +40°C
卫星定位模块	GPS/GLONASS或BDSS/GLONASS 双模双冗余

## Aircraft

Main Rotor Dia.	21 x 7 inch
Diagonal Wheelbase	1133mm
Overall (L x W x H)	Unfolded 1200 x 1050 x 480mm / Folded 600 x 480 x 480mm
Weight	Standard takeoff weight 10kg (with battery) / maximum takeoff weight 15kg
Remote Controller	WKRC-H15Z
Max Ascent Speed	5m/s
Max Descent Speed	2m/s
Max Horizontal Flight Speed	Positioning mode 5m/s, motion mode 8m/s, posture mode 15m/s.
Max Angle Of Inclination	Positioning mode 30°, motion mode 30°, posture mode 30°,
Max Speed Of Rotation Angle	120°/s
Max Wind Resistance	8m/s
Hovering Accuracy	Vertical: ±0.5m(when GPS positioning working) Horizontal: ±0.1m(when GPS positioning working)
Flight Time	No payload: Standard flight time 60 minutes
Working Temperature	10°C 至 +40°C
GNSS	PS/GLONASS or BDSS/GLONASS dual-mode and dual-sink

## 云台系参数

稳云台系参数	3轴(俯仰、横滚、水平)
角度控制精度	静态: ±0.008°; 动态: ±0.02°; 防抖: ±0.008°
可控转动范围	俯仰: -110°至 +60°; 水平: ±150°; 横滚: ±10°
最大控制转速	俯仰: 30°/s; 水平: 30°/s

## Gimbal

Stabilization System	3 axis (Pitch, Roll, Horizontal)
Controllable Accuracy	Static: ±0.008°; Motion: ±0.02°; Shake-proof: ±0.008°
Controllable Range	Pitch: -110°~ +60°; Horizontal: ±150°; Roll: ±10°
Max Controllable Speed	Pitch: 30°/s; Horizontal: 30°/s

## 相机参数

传感器	1/2.3 SONY IMX117 CMOS
ISO 范围	100-3200(视频) / 100-1600(照片)
录制分辨率	4K 30fps
拍照分辨率	3840 x 2160
焦距	6.7-134.5mm
变焦倍率	30倍光学变焦
变倍速度	大约2.0秒
水平视角	59.8° - 3.0°(广角-望远)
近摄距	10 - 1500mm(广角-望远)
视频存储最大码流	64Mbps
压缩标准	H.264 / H.265
支持文件存储格式	JPG/MP4
支持存储卡类型	Micro-SD卡, 最大支持128G, 传输速度为Class10及以上或达 到UHS-1评级的Micro SD卡

## Camera

Sensor	1/2.3 SONY IMX117 CMOS
ISO Range	100-3200(Video) / 100-1600(Image)
Video Resolution	4K 30fps
Photo Resolution	3840 x 2160
Focal Length	6.7-134.5mm
Zoom Ratio	30x optical zoom
Zoom Speed	About 2.0s
Horizontal View	59.8° - 3.0°(Wide Angle-Telescopic)
Close-shot Distance	10 - 1500mm(Wide Angle-Telescopic)
Video Storage Maximum	64Mbps
Compress Standard	H.264 / H.265
Files Format	JPG/MP4
Support Micro-SD	Micro-SD Card (maximum 128G,transmitting speed is C10 and above or UHS-1)

## 飞行电池参数

电压	22.8V*2
容量	22000mAh
放电倍率	25C
电池类型	LiHV 12S

## Aircraft Battery

Voltage	22.8V*2
Capacity	22000mAh
Discharge rate	25C
Battery type	LiHV 12S

## 遥控器参数

工作频率	2.4GHz&5.8GHz双频
内存	RAM: 4G; ROM: 16G
系统	Android 5.1
信号有效距离	约10千米 (开阔无遮挡, 无电磁干扰)
视频输出接口	HDMI
内置电池	7.4V 9000mAh LiPo 2S
存储卡类型	最大支持64GB容量的microSD卡

## Remote Controller

Working frequency	2.4GHz & 5.8GHz dual frequency
Internal storage	RAM: 4G; ROM: 16G
System	Android 5.1
Signal effective distance	About 10KM(open,no electromagnetic interference)
Video output interface	HDMI
Built-in battery	7.4V 9000mAh LiPo 2S
Memory card type	Maximum support for 64GB microSD card

智造无限可能  
Intelligence makes it possible



广州市华科尔科技股份有限公司  
Guangzhou Walkera Technology Co.,Ltd.

网址: [www.walkera.com](http://www.walkera.com)  
电话: (86) 20 8491 5115 8491 5116 8491 5117  
e-mail: [sales@walkera.com](mailto:sales@walkera.com)  
地址: 广州市南沙区东涌镇太石工业区万泰路48号

[www.walkera.com](http://www.walkera.com)  
Tel: (86) 20 8491 5115 8491 5116 8491 5117  
e-mail: [sales@walkera.com](mailto:sales@walkera.com)

NO 48 Wantai Rd, Taishi Industrial Park, Dongchong Town, Nansha Dist, Guangzhou, China 511453